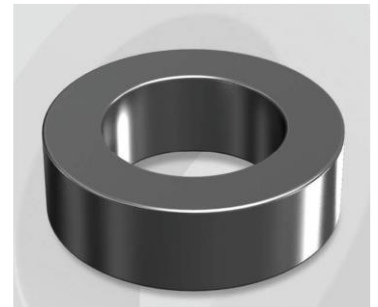


# CH378060GT

## Electrical Characteristics

Material	Permeability ( $\mu$ )	AL $\pm$ 8% (nH/N <sup>2</sup> )	DCB (% min) @ 100 Oe	Coreloss (mW/cm <sup>2</sup> , max) @ 50kHz, 1000G
High Flux GT	60	70	77.4	180

OD : 378



## Core Dimensions

Dimensions		Uncoated		Coated		Color	Packaging
		(mm)	(inch)	(mm)	(inch)		
OD	(Max)	37.80	1.488	38.70	1.524	Black	Box Qty = 120 pcs
ID	(min)	23.20	0.913	22.30	0.878		
HT	(max)	12.50	0.492	13.40	0.528		

## Physical Characteristics

Cross Section (A)	Path Length (l)	Window Area (Wa)	Volume (V)	Breakdown Voltage (Vac)
0.867 cm <sup>2</sup>	9.40 cm	3.91 cm <sup>2</sup>	8.1498 cm <sup>3</sup>	1,000
0.134 in <sup>2</sup>	3.701 in	771,660 cmil	0.4973 in <sup>3</sup>	

## Winding Information

0% Winding length/turn (cm)		
4.320		
40% winding factor Surface Area (cm <sup>2</sup> )		
64.65		
40% Wound Di.(mm)		
OD	ID	HT
44.33	14.61	20.06

For Your Reference Only

## Typical DC Bias Performance

