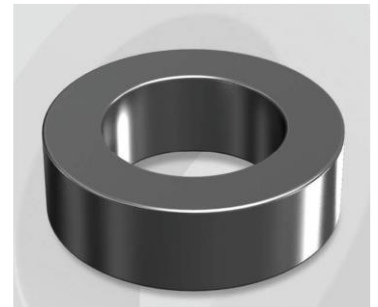


CH229060GT

Electrical Characteristics

Material	Permeability (μ)	AL \pm 8% (nH/N ²)	DCB (% min) @ 100 Oe	Coreloss (mW/cm ² , max) @ 50kHz, 1000G
High Flux GT	60	43	77.4	180

OD : 229



Core Dimensions

Dimensions		Uncoated		Coated		Color	Packaging
		(mm)	(inch)	(mm)	(inch)		
OD	(Max)	22.86	0.900	23.62	0.930	Black	Box Qty = 850 pcs
ID	(min)	13.97	0.550	13.39	0.527		
HT	(max)	7.62	0.300	8.38	0.330		

Physical Characteristics

Cross Section (A)	Path Length (l)	Window Area (Wa)	Volume (V)	Breakdown Voltage (Vac)
0.331 cm ²	5.67 cm	1.41 cm ²	1.8768 cm ³	1,000
0.05131 in ²	2.232 in	278,271 cmil	0.1145 in ³	

Winding Information

0% Winding length/turn (cm)		
2.699		
40% winding factor Surface Area (cm ²)		
24.13		
40% Wound Di.(mm)		
OD	ID	HT
26.99	8.77	12.37

For Your Reference Only

Typical DC Bias Performance

