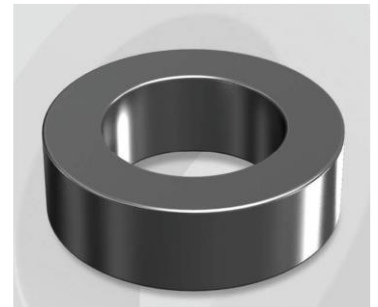


# CS778026G

## Electrical Characteristics

Material	Permeability ( $\mu$ )	AL $\pm$ 8% (nH/N <sup>2</sup> )	DCB (% min) @ 200 Oe	Coreloss (mW/cm <sup>2</sup> , max) @ 50kHz, 100G
SENDUST	26	37	46.0	2.4

OD : 778



## Core Dimensions

Dimensions		Uncoated		Coated		Color	Packaging
		(mm)	(inch)	(mm)	(inch)		
OD	(Max)	77.80	3.063	78.90	3.106	Black	Box Qty = 35 pcs
ID	(Min)	49.23	1.938	48.00	1.890		
HT	(Max)	15.90	0.626	17.20	0.677		

## Physical Characteristics

Cross Section (A)	Path Length (l)	Window Area (Wa)	Volume (V)	Breakdown Voltage (Vac)
2.270 cm <sup>2</sup>	20.0 cm	17.99 cm <sup>2</sup>	45.40 cm <sup>3</sup>	1,000
0.352 in <sup>2</sup>	7.87 in	3,550,424 cmil	2.770 in <sup>3</sup>	

## Winding Information

0% Winding length/turn (cm)		
6.530		
40% winding factor Surface Area (cm <sup>2</sup> )		
236.84		
40% Wound Di.(mm)		
OD	ID	HT
91.14	31.33	31.65

For Your Reference Only

## Typical DC Bias Performance

