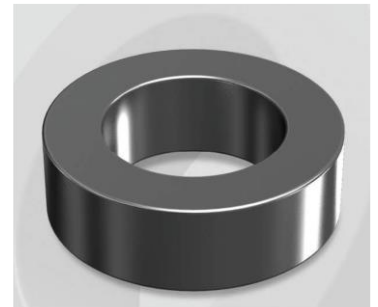


CM203026G

Electrical Characteristics

Material	Permeability (μ)	AL \pm 8% (nH/N ²)	DCB (% min) @ 200 Oe	Coreloss (mW/cm ³ , max) @ 50kHz, 1000G
MPP	26	14	49.68	255

OD : 203



Core Dimensions

Dimensions		Uncoated		Coated		Color	Packaging
		(mm)	(inch)	(mm)	(inch)		
OD	(Max)	20.32	0.800	21.10	0.831	Black	Box Qty = 1,368 pcs
ID	(min)	12.70	0.500	12.07	0.475		
HT	(max)	6.35	0.250	7.11	0.280		

Physical Characteristics

Cross Section (A)	Path Length (l)	Window Area (Wa)	Volume (V)	Breakdown Voltage (Vac)
0.226 cm ²	5.09 cm	1.14 cm ²	1.150 cm ³	1,000
0.035 in ²	2.00 in	224,985 cmil	0.07019 in ³	

Winding Information

0% Winding length/turn (cm)		
2.325		
40% winding factor Surface Area (cm ²)		
18.95		
40% Wound Di.(mm)		
OD	ID	HT
24.13	7.89	10.72

For Your Reference Only

Typical DC Bias Performance

