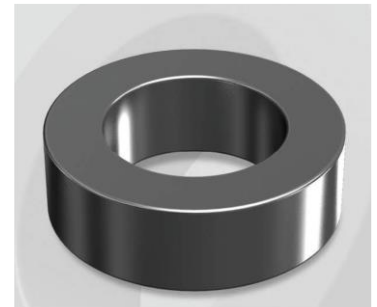


CH166060G

OD : 166

Electrical Characteristics

Material	Permeability (μ)	AL ± 8% (nH/N ²)	DCB (% min) @ 50 Oe	Coreloss (mW/cm ³ , max) @50kHz, 1000G
High Flux	60	35	82.80	270



Core Dimensions

Dimensions		Uncoated		Coated		Color	Packaging
		(mm)	(inch)	(mm)	(inch)		
OD	(Max)	16.51	0.650	17.40	0.685	Black	Box Qty = 1,960 pcs
ID	(min)	10.16	0.400	9.53	0.375		
HT	(max)	6.35	0.250	7.11	0.280		

Physical Characteristics

Cross Section (A)	Path Length (ℓ)	Window Area (Wa)	Volume (V)	Breakdown Voltage (Vac)
0.192 cm ²	4.11 cm	0.713 cm ²	0.7891 cm ³	1,000
0.02976 in ²	1.618 in	140,714 cmil	0.0482 in ³	

Winding Information

0% Winding length/turn (cm)		
2.209		
40% winding factor Surface Area (cm ²)		
13.66		
40% Wound Di.(mm)		
OD	ID	HT
19.77	6.24	9.94

For Your Reference Only

Typical DC Bias Performance

